



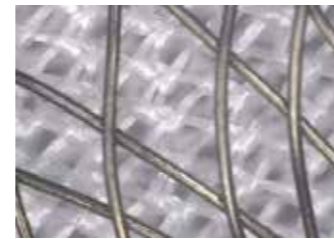
The Cera™ Occluder series has been demonstrated its benefits in design and material, proven its efficacy and safety in congenital and structural heart disease treatment with over 50,000 occluders implanted.

## BENEFITS

### Excellent Long-term Benefit –Proprietary Titanium Nitride (TiN) Coating

- Decrease the metallic ion leaching<sup>(1)</sup>.
- Accelerate endothelialization, lessen thrombus complication<sup>(2)</sup>.

### Efficacy and Safety



PET



PTFE

- Reduce vessel trauma by low profile sheath with PET Membrane securely sewn into ASD / PFO device<sup>(3)</sup>.
- Block high-pressure blood flow with PTFE Membrane securely sewn into VSD / PDA device<sup>(3)</sup>.
- Reduce atrioventricular block occurrence effectively with superior memory feature.

### Precisely Matched Clinical Condition

- Four types of VSD devices designed upon anatomical feature.
- ASD occluder is available ranging from 6 to 42 mm, and PDA occluder ranging from 0406 to 2224.

## Full Range of Products to Meet Clinical Needs



Cera™ ASD Occluder



Cera™ Multi-Fenestrated (Cribriform) ASD Occluder



Cera™ Muscular VSD Occluder



Cera™ Membranous VSD (Symmetric) Occluder



Cera™ Membranous VSD (Asymmetric) Occluder



Cera™ Membranous VSD (Eccentric) Occluder



Cera™ PDA Occluder



Cera™ PFO Occluder

### Reference

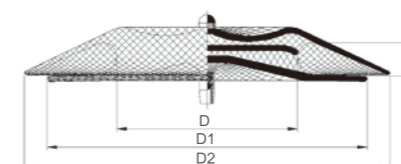
- (1) D.Y. Zhang, W.J. Zeng, Z.J. Zi, and P.K. Chu, Fabrication of graded TiN coatings on nitinol occluders and effects on in vivo nickel release, Materials Science and Engineering C. 29 (2009), 1599-1603.
- (2) Cera™ Animal Study: Compared to Nitinol occluder, the Cera™ occluder have demonstrated that faster and better growth of endothelial cell and lower risk of thrombus formation.
- (3) J.W. Chen, et al., Transcatheter closure of congenital heart defect with homemade occluder: a report of 53 cases. South China Journal of Cardiovascular Diseases.(2005), 11(6): 421-423.

For the Excellent Long-term Benefit

## Ordering Information

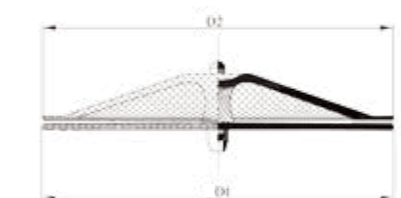
### Cera™ ASD Occluder

Code	D Waist Diameter (mm)	D1 Right Disc Diameter (mm)	D2 Left Disc Diameter (mm)	L Waist Length (mm)	Minimum Recommended Sheath Size SteerEase™ (Fr.)	Minimum Recommended Sheath Size Fusta™ (Fr.)
LT-ASD-06	6	14	18	4	SFA7F	SVA7F-800
LT-ASD-08	8	16	20	4	SFA7F	SVA7F-800
LT-ASD-10	10	18	22	4	SFA7F	SVA7F-800
LT-ASD-12	12	22	26	4	SFA8F	SVA8F-800
LT-ASD-14	14	24	28	4	SFA8F	SVA8F-800
LT-ASD-16	16	26	30	4	SFA8F	SVA8F-800
LT-ASD-18	18	28	32	4	SFA8F	SVA8F-800
LT-ASD-20	20	30	34	4	SFA10F	SVA10F-800
LT-ASD-22	22	32	36	4	SFA10F	SVA10F-800
LT-ASD-24	24	34	38	4	SFA12F	SVB12F-800
LT-ASD-26	26	36	40	4	SFA12F	SVB12F-800
LT-ASD-28	28	38	42	4	SFA12F	SVB12F-800
LT-ASD-30	30	40	44	4	SFA12F	SVB12F-800
LT-ASD-32	32	42	46	4	SFA12F	SVB12F-800
LT-ASD-34	34	44	50	4	SFA14F	SVB14F-800
LT-ASD-36	36	46	52	4	SFA14F	SVB14F-800
LT-ASD-38	38	48	54	4	SFA14F	SVB14F-800
LT-ASD-40	40	50	56	4	SFA14F	SVB14F-800
LT-ASD-42	42	52	58	4	SFA14F	SVB14F-800



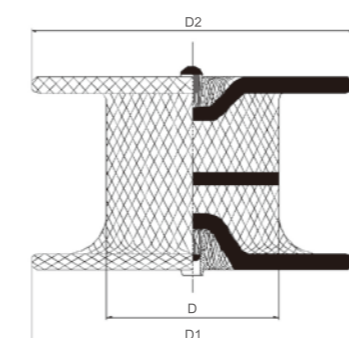
### Cera™ Multi-Fenestrated(Cribriform) ASD Occluder

Code	D1 Right Disc Diameter (mm)	D2 Left Disc Diameter (mm)	L Waist Length (mm)	Minimum Recommended Sheath Size SteerEase™ (Fr.)
LT-ASD-MF-1818	18	18	3	SFA8F
LT-ASD-MF-2518	25	18	3	SFA9F
LT-ASD-MF-2525	25	25	3	SFA9F
LT-ASD-MF-3030	30	30	3	SFA10F
LT-ASD-MF-3525	35	25	3	SFA12F
LT-ASD-MF-3535	35	35	3	SFA12F
LT-ASD-MF-4040	40	40	3	SFA12F



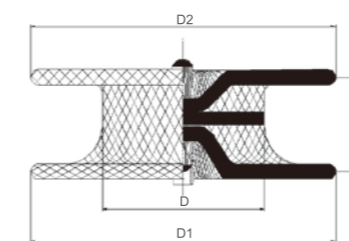
### Cera™ Muscular VSD Occluder

Code	D Waist Diameter (mm)	D1 Right Disc Diameter (mm)	D2 Left Disc Diameter (mm)	L Waist Length (mm)	Minimum Recommended Sheath Size SteerEase™ (Fr.)
LT-VSD-MU-04	4	10	10	7	SFP5F
LT-VSD-MU-05	5	11	11	7	SFP5F
LT-VSD-MU-06	6	12	12	7	SFP5F
LT-VSD-MU-07	7	13	13	7	SFP6F
LT-VSD-MU-08	8	14	14	7	SFP7F
LT-VSD-MU-10	10	16	16	7	SFP7F
LT-VSD-MU-12	12	18	18	7	SFP9F
LT-VSD-MU-14	14	20	20	7	SFP9F
LT-VSD-MU-16	16	22	22	7	SFP9F
LT-VSD-MU-18	18	24	24	7	SFP10F
LT-VSD-MU-20	20	26	26	7	SFP10F
LT-VSD-MU-22	22	28	28	7	SFP12F
LT-VSD-MU-24	24	30	30	7	SFP12F



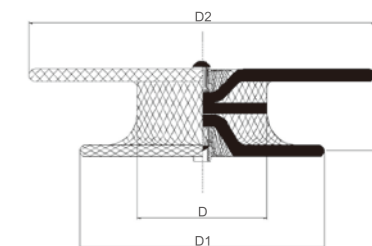
### Cera™ Membranous VSD (Symmetric) Occluder

Code	D Waist Diameter (mm)	D1 Right Disc Diameter (mm)	D2 Left Disc Diameter (mm)	L Waist Length (mm)	Minimum Recommended Sheath Size SteerEase™ (Fr.)
LT-VSD-Sym-04	4	8	8	3	SFP5F
LT-VSD-Sym-05	5	9	9	3	SFP5F
LT-VSD-Sym-06	6	10	10	3	SFP6F
LT-VSD-Sym-07	7	11	11	3	SFP6F
LT-VSD-Sym-08	8	12	12	3	SFP7F
LT-VSD-Sym-10	10	14	14	3	SFP7F
LT-VSD-Sym-12	12	16	16	3	SFP9F
LT-VSD-Sym-14	14	19	19	3	SFP9F
LT-VSD-Sym-16	16	21	21	3	SFP9F
LT-VSD-Sym-18	18	23	23	3	SFP10F
LT-VSD-Sym-20	20	25	25	3	SFP10F
LT-VSD-Sym-22	22	27	27	3	SFP12F
LT-VSD-Sym-24	24	29	29	3	SFP12F



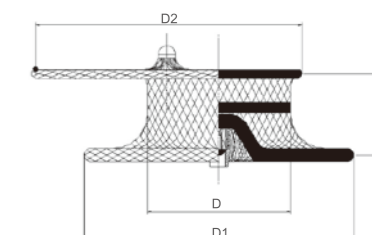
### Cera™ Membranous VSD (Asymmetric) Occluder

Code	D Waist Diameter (mm)	D1 Right Disc Diameter (mm)	D2 Left Disc Diameter (mm)	L Waist Length (mm)	Minimum Recommended Sheath Size SteerEase™ (Fr.)
LT-VSD-Asym-04	4	9	11.6	3	SFP5F
LT-VSD-Asym-05	5	10	12.6	3	SFP5F
LT-VSD-Asym-06	6	11	13.6	3	SFP6F
LT-VSD-Asym-07	7	12	14.6	3	SFP6F
LT-VSD-Asym-08	8	13	15.6	3	SFP7F
LT-VSD-Asym-10	10	15	17.6	3	SFP7F
LT-VSD-Asym-12	12	17	19.6	3	SFP9F
LT-VSD-Asym-14	14	19	21.6	3	SFP9F
LT-VSD-Asym-16	16	21	23.6	3	SFP9F
LT-VSD-Asym-18	18	23	25.6	3	SFP10F
LT-VSD-Asym-20	20	25	27.6	3	SFP10F
LT-VSD-Asym-22	22	27	29.6	3	SFP12F
LT-VSD-Asym-24	24	29	31.6	3	SFP12F



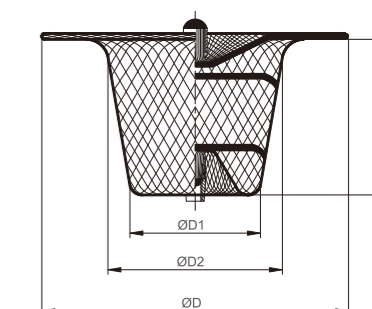
### Cera™ Membranous VSD (Eccentric) Occluder

Code	D Waist Diameter (mm)	D1 Right Disc Diameter (mm)	D2 Left Disc Diameter (mm)	L Waist Length (mm)	Minimum Recommended Sheath Size SteerEase™ (Fr.)
LT-VSD-Ecc-04	4	10	10	3	SFP5F
LT-VSD-Ecc-05	5	11	11	3	SFP5F
LT-VSD-Ecc-06	6	12	12	3	SFP6F
LT-VSD-Ecc-07	7	13	13	3	SFP6F
LT-VSD-Ecc-08	8	14	14	3	SFP7F
LT-VSD-Ecc-10	10	16	16	3	SFP7F
LT-VSD-Ecc-12	12	18	18	3	SFP9F
LT-VSD-Ecc-14	14	20	20	3	SFP9F
LT-VSD-Ecc-16	16	22	22	3	SFP9F
LT-VSD-Ecc-18	18	24	24	3	SFP10F
LT-VSD-Ecc-20	20	26	26	3	SFP10F
LT-VSD-Ecc-22	22	28	28	3	SFP12F
LT-VSD-Ecc-24	24	30	30	3	SFP12F



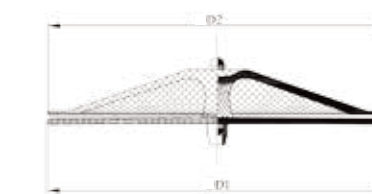
### Cera™ PDA Occluder

Code	D Retention Skirt (mm)	D1 Proximal Disc Diameter (mm)	D2 Distal Disc Diameter (mm)	L Waist Length (mm)	Minimum Recommended Sheath Size SteerEase™ (Fr.)	Maximum Recommended Sheath Size SteerEase™ (Fr.)
LT-PDA-0406	10	4	6	7	SFP5F	SFP6F
LT-PDA-0608	12	6	8	7	SFP6F	SFP7F
LT-PDA-0810	14	8	10	7	SFP7F	SFP7F
LT-PDA-1012	16	10	12	7	SFP8F	SFP8F
LT-PDA-1214	20	12	14	7	SFP8F	SFP9F
LT-PDA-1416	22	14	16	8	SFP8F	SFP9F
LT-PDA-1618	24	16	18	8	SFP9F	SFP10F
LT-PDA-1820	26	18	20	9	SFP10F	SFP12F
LT-PDA-2022	28	20	22	9	SFP12F	SFP12F
LT-PDA-2224	30	22	24	10	SFP12F	SFP14F



### Cera™ PFO Occluder

Code	D1 Right Disc Diameter (mm)	D2 Left Disc Diameter (mm)	L Waist Length (mm)	Minimum Recommended Sheath Size SteerEase™ (Fr.)
LT-PFO-1818	18	18	3	SFA8F
LT-PFO-2518	25	18	3	SFA9F
LT-PFO-2525	25	25	3	SFA9F
LT-PFO-3025	30	25	3	SFA10F
LT-PFO-3030	30	30	3	SFA10F
LT-PFO-3525	35	25	3	SFA12F



## Lifetech Scientific (Shenzhen) Co., Ltd.

Add: Floor 1-5, Cybio Electronic Building, Langshan 2nd Street, North Area of High-tech Park, Nanshan District, Shenzhen 518057, P. R. China  
 Tel: +86-755-86026250 Fax: +86-755-86026251  
 Email: marketing@lifetechmed.com  
 Web: www.lifetechmed.com

EU authorized representative:  
 LifeTech Scientific (Europe) Coöperatief U.A  
 Oudemolenstraat 60, 6416CB Heerlen, the Netherlands